

Introducing LFM NetView 4.0

New Release

Secure, on-demand access to laser scan data for asset management and project execution.

The continual drive for both construction and operational efficiency coupled with the increasing quantity and quality of data capture technology are rapidly broadening the use of laser scan data across the asset lifecycle.

This ground-up redesign of LFM NetView delivers the as-operated asset conditions to the desktops and mobile devices of all asset stakeholders allowing for secure global collaboration across multiple project teams and partner companies.

LFM NetView 4.0 is a simple, intuitive way to view laser scan images and access a trusted 'as-is' dataset via company networks or the internet. Projects can be efficiently stored and managed locally, or as an enterprise Cloud based solution. The LFM NetView 4.0 project brings laser survey data to a wide range of users, either in the office or on the move. The imagery and tools are simple to access and use allowing any number of stakeholders to concurrently visualise conditions on site and quickly add or extract reliable intelligence.

LFM NetView 4.0 represents an innovative and unique approach to sharing 3D laser scan data online as it connects back to the master LFM Server dataset. This approach ensures that resolution of 3D laser scan data is maintained when accessed enabling remote and rapid access to huge datasets containing an unlimited number of scans.

Business Benefits

■ Productivity

The LFM NetView approach is unique: for the first time, end-users can remotely and rapidly access huge databases containing an unlimited number of scans.

■ Security

Security is paramount. LFM NetView has security features designed into its core functionality and uses secure certificated (https) communications for all interactions between viewer and project host. All the project files used by the software are encrypted, and can only be decrypted within the components of the LFM NetView system.

■ Collaboration

Multiple stakeholders can review the data at the same time, enabling users in different offices to carry out interactive, collaborative project reviews, including joint mark-up and measurement.

■ Safety

LFM NetView extends the usual benefit of minimising time spent on site in hazardous or hard to access environments by facilitating pre-planning and preparation for inspection and maintenance tasks.



Key Features

■ Fast-Tagging & Intuitive Mark-Up

Adding intelligence to an asset has never been so easy with simple 'locate and tag' functionality. Simply navigate to the area or item you are interested in, select it and start adding intelligence. LFM NetView 4.0 allows you to instantly add URL's (links to data, websites or documents) and intuitively creates attributes as you type.

■ Tablet Enabled

LFM NetView 4.0 is a ground-up redesign utilising the latest web technology. Current access via Internet Explorer 11 and Google Chrome facilitate optimisation for tablet consumption allowing you to take the digital asset to site.

■ Online/Offline Operation

The Offline Mode enables users to download all or part of a project, take measurements and add annotations and then synchronise back to the master dataset. The lightweight scans are cached locally which provides an ideal solution for performing on-site reviews, inspection work-packs, safety briefings and many more activities.

■ Cloud Enabled

By utilising the Microsoft Azure platform LFM are delivering a trusted, secure and globally accessible option for delivering or accessing your laser scan project data. Microsoft Azure not only represents a truly scalable delivery mechanism but all-importantly it facilitates a hybrid cloud solution between your own data centre and public cloud allowing you the freedom of choice for your projects.

■ LIVE Link to the Trusted Living Pointcloud™

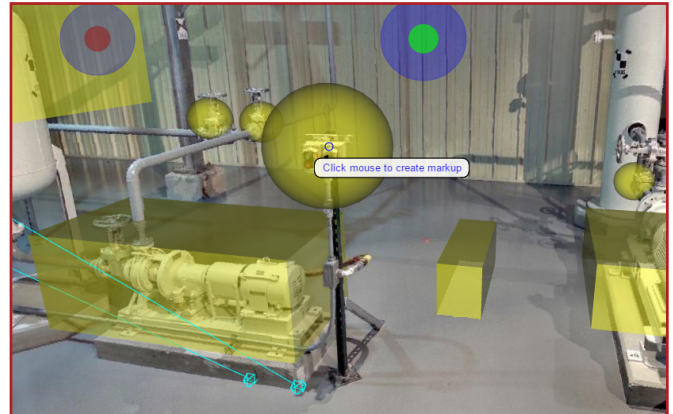
Unlike any other solution on the market LFM NetView maintains a live link via LFM Server to the same project data that is being used by the rest of your organisation allowing engineering and operations teams to share intelligence quickly and easily.

■ Integrated floorplan

■ Access to huge scan databases for end-users

■ Extensive measurement capabilities

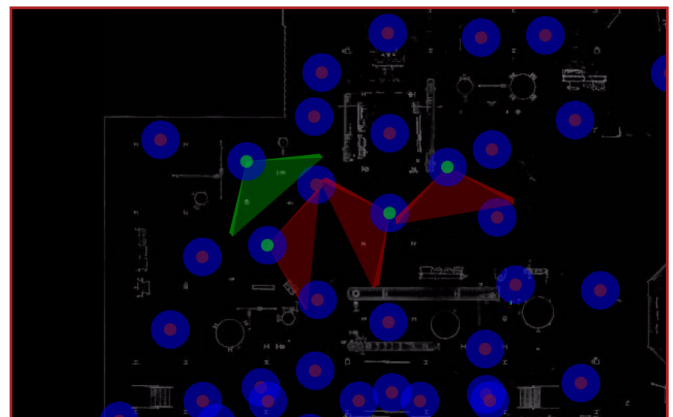
■ High-resolution BubbleView™ Interface



Add Intelligence by simply highlighting the component or area and typing in attributes or URL links.



The tiled view enables four different scan positions to be viewed on screen at a single time for increased perspective.



A key plan provides an overview of the locations of scan positions allowing users to identify the best BubbleViews to open.

LFM Software Limited, an AVEVA Group company

LFM Software Limited believes the information in this publication is correct as of its publication date. As part of continued product development, such information is subject to change without prior notice and is related to the current software release. LFM Software Limited is not responsible for any inadvertent errors. All product names mentioned are the trademarks of their respective holders.

Information in this datasheet relates to product version 2.0 unless otherwise stated.

Copyright © 2012 AVEVA Solutions Limited and its subsidiaries. All rights reserved. LFM/NTV4/DS/15A

T : +44 (0)161 869 0450 | F : +44 (0)161 869 0451 | W : www.lfm-software.com